

5.2 Clip features

5.2.1 PDF file searching for specific clip features

The PDF of the user manual may be searched to find clips that match the given CF-words ('CF'= Clip Feature).

5.2.2 Excel file sorting for specific clip features

In addition to the PDF of this manual, an Excel file is provided which lists all the clips and the clip features in columns. This spreadsheet is in Excel .xls format (compatible with Excel versions from 97-2000 and later).

There are two tabs in the spreadsheet:

- the first tab has the clip set title: this has all the items listed in the manual for the clip
- the second tab "Clip features" just lists the individual clips, with the list of their clip features and individual columns for each individual clip feature.

Probably the "Clip features" tab is easiest to use to find specific clips with specific features, although every column may be sorted for specific features, by clicking on the drop-down arrow adjacent to each column heading (the examples below are from the T2V001 USA East clip set)

| 1 | A | B | C | D | E | F | G |
|---|---------------------------------|-------------------|--|----------------------------|--|--------------|-----------------|
| 2 | Number(s) | File | Filename(s) | Horizontal x vertical size | Progressive / Interlaced | Video format | Bits per sample |
| 3 | T2V001001, T2V001101, T2V001201 | Bars_countdown | T2V001001_Bars_countdown_1920x1080p.yuv | 1920x1080; 1280x720 | p' file suffix = progressive; 1' YUV planar 4:8 (for each of 1HD colo | | |
| 4 | T2V001002, T2V001102, T2V001202 | Stars_n_Stripes | T2V001002_Stars_n_Stripes_1920x1080p.yuv | 1920x1080; 1280x720 | p' file suffix = progressive; 1' YUV planar 4:8 (for each of 1US flag | | |
| 5 | T2V001003, T2V001103, T2V001203 | Times_Square | T2V001003_Times_Square_1920x1080p.yuv | 1920x1080; 1280x720 | p' file suffix = progressive; 1' YUV planar 4:8 (for each of 1Somew | | |
| 6 | T2V001004, T2V001104, T2V001204 | Chrysler_building | T2V001004_Chrysler_building_1920x1080p.yuv | 1920x1080; 1280x720 | p' file suffix = progressive; 1' YUV planar 4:8 (for each of 1Slow zo | | |
| 7 | T2V001005, T2V001105, T2V001205 | Display | T2V001005_Display_1920x1080p.yuv | 1920x1080; 1280x720 | p' file suffix = progressive; 1' YUV planar 4:8 (for each of 1Large ou | | |

Click arrow to get drop-down list of items in this column (example below for 'SS.01 People')

| AC | AD | AE | AF |
|------|-------|-------------------------------------|-------|
| C.10 | LC.11 | SS.01 | SS.02 |
| - | Some | (All) (Top 10...) (Custom...) | One |
| - | - | Few | - |
| - | - | Many | - |
| - | - | One | - |
| - | - | People | - |

Select 'One' to show only clips with 'One' under 'SS.01 People'

Note that this first tab on the spreadsheet is roughly 100 columns wide (from column A to column CZ), so it may be helpful to use the 'Freeze Panes' feature (on the 'Window' menu in Excel 2000 and 2003) or split windows to keep the clip number visible.

The "Clip features" tab appears and can be sorted as indicated below:

| A | B | C | D | E | F | G |
|----|-----------------------------|--|-----------|---------|-----------|--------------|
| 1 | Clip number / name | Clip features | CF-animal | CF-angl | CF-bandin | CF-black_bac |
| 2 | T2V001001_Bars_countdown | CF-text, CF-dark_areas, CF-patterns, CF-black_background, CF-round_objects, CF-transitions, CF-large_monochromatic | | | | y |
| 3 | T2V001002_Stars_n_Stripes | CF-bright_colours, CF-large_monochromatic, CF-movement_across | | | | |
| 4 | T2V001003_Times_Square | CF-panning, CF-complex_scene | | | | |
| 5 | T2V001004_Chrysler_building | CF-zoom_in, CF-fine_details, CF-low_contrast, CF-dull_daylight | | | | |
| 6 | T2V001005_Display | CF-high_contrast, CF-rapid_changes | | | | |
| 7 | T2V001006_Smiling | CF-faces, CF-people | | | | |
| 8 | T2V001007_Traffic_duty | CF-faces, CF-text, CF-people | | | | |
| 9 | T2V001008_Empire_State | CF-patterns, CF-scroll, CF-faces, CF-hand_held | | | | |
| 10 | T2V001009_FDNY | CF-out_of_focus, CF-vehicles | | | | |
| 11 | T2V001010_Checked_caps | CF-people, CF-movement_out, CF-patterns | | | | |
| 12 | T2V001011_Gold_statue | CF-water, CF-patterns, CF-large_monochromatic | | | | |
| 13 | T2V001012_Eyewitness_news | CF-moving_text | | | | |

Selecting a drop-down menu and clicking on 'y' reduces the list to those that have that CF value:

| Clip number / name | Clip features |
|------------------------------|---|
| 4 T2V001003 Times_Square | CF-panning, CF-complex_scene |
| 34 T2V001033_People_crossing | CF-complex_scene, CF-vehicles, CF-people |
| 36 T2V001035_Pan_left | CF-panning, CF-complex_scene, CF-tracking |
| 45 T2V001044_Times_Sq_night | CF-night, CF-complex_scene, CF-dark_areas, CF-transitions, CF-scene_change, CF-graininess |
| 48 T2V001047_Broadway | CF-night, CF-text, CF-complex_scene |

5.2.3 List of 'CF' ('clip features') words used

The PDF of the user manual may be searched to find clips that match the given CF-words ('CF'= Clip Feature).

- | | | |
|-------------------------|-----------------------|------------------------|
| CF-bright_sunlight | CF-bright_daylight | CF-sunrise_sunset |
| CF-dull_daylight | CF-brightness_change | CF-shaded |
| CF-indoors_bright | CF-indoors_dark | CF-night |
| CF-twilight | CF-light_picture | CF-dark_picture |
| CF-high_contrast | CF-black_background | CF-dark_areas |
| CF-low_contrast | CF-white_background | CF-monochromatic |
| CF-people | CF-vehicles | CF-water |
| CF-buildings | CF-faces | CF-text |
| CF-trees | CF-leaves_grass | CF-crowd |
| CF-sky | CF-clouds | CF-complex_scene |
| CF-patterns | CF-reflections | CF-round_objects |
| CF-round | | |
| CF-lines | CF-moire | CF-moving_text |
| CF-fine_details | CF-highlights | CF-light_sky |
| CF-graininess | CF-out_of_focus | CF-depth_of_field |
| CF-bright_colours | CF-dull_colours | CF-large_monochromatic |
| CF-movement_in | CF-movement_out | CF-movement_up/down |
| CF-movement_across | CF-random_movement | CF-diagonal_movement |
| CF-coordinated_movement | CF-from_above | CF-hand_held |
| CF-low_subject_movement | CF-rapid_movement | CF-rapid_changes |
| CF-slow_motion | CF-speeded_up | |
| CF-fast_track_pan | CF-panning | CF-scroll |
| CF-tracking | CF-tracking_following | CF-jerky |

CF-transition

CF-zoom_in

CF-angled

CF-sound_vehicles

CF-sound_other

CF-transitions

CF-zoom_out

CF-
subjects_behind_foreground

CF-sound_talking

CF-wind

CF-fade

CF-rapid_zoom

CF-banding

CF-sound_water

CF-music

6. Detailed information on individual clips

The following pages provide detailed information on the clips in this set.

6.1 Detailed description of each clip

This section contains detailed descriptions of each video clip, and the associated audio.

70 features are listed for each clip: the purpose of providing these descriptions is to make it easier to select specific clips for specific features.

Therefore even if a characteristic does occur in a particular clip, this is not necessarily listed where it is not a prominent feature and/or where it is believed that the clip would not be selected for this particular feature.

Clearly to some extent these descriptions and selections are subjective, and the user is likely to come to their own conclusions as to which are most relevant to their particular codec / situation: the descriptions provided are intended to be an appropriate starting point.

01_Asakusa_man



| | | |
|-------|---|---|
| GN.01 | Filename(s) | T2V027n01_Asakusa_man_<xsize>x<ysize><f>rr_8b_P420.yuv |
| GN.02 | Horizontal x vertical sizes | 1920x1080p25 ; 1280x720i25 TFF ; 720x576p50 ; 720x576p25 ; 720x480p50 ; 720x480p25 ; 720x480i25 TFF ; 720x480i25 BFF (all 4:2:0 8-bit) |
| GN.03 | Progressive / Interlaced | p50 and p25 - Progressive; i25 TFF - Interlaced Top Field First; i25 BFF - Interlaced Bottom Field First |
| GN.04 | Video format | YUV planar 4:2:0 |
| GN.05 | Bits per sample | 8 (for each of Y, U, V) |
| GN.06 | Video description | Japanese man looking directly at the camera (with heat-haze in background on rooves) |
| GN.07 | Principal purposes | Continuous random movement of background, with foreground obscuration, and no global movement |
| GN.08 | Duration (mins:secs:frames): | 0:23:41 (50p), 0:23:20 (25i and 25p) |
| GN.09 | Number of frames | 1,191 (50p) : 595 (25i) : 596 (25p) |
| GN.10 | File sizes on disk (MB) [same order as Horizontal x Vertical sizes] | 3,704 : 823 : 741 : 370 : 617 : 308 : 308 : 308 |
| GN.11 | Original video format | 1920x1080 progressive 50.0 fps |
| GN.12 | CF-words | CF-bright_daylight, CF-brightness_change, CF-crowd, CF-depth_of_field, CF-faces, CF-movement_across, CF-people, CF-sound_talking, CF-talking_head |
| GN.13 | Associated audio types | MPEG1 Layer II 48kHz 16bit stereo 384kbps Constant Bit Rate : 16bit uncompressed 48kHz stereo WAV |
| GN.14 | Associated audio filenames | T2a027x01_Asakusa_man_act_MP1LII.mpa : T2a027y01_Asakusa_man_act_unc.wav |
| GN.15 | Associated audio description | Actual audio recorded with video |
| GN.16 | Audio duration | Same as video (video played at 50.0fps) |

| Clip features | Details | LC.10 Backlighting | - |
|-------------------------|---------|-------------------------------|------|
| LIGHT CONDITIONS | | LC.11 Large brightness change | Few |
| LC.01 Bright sunlight | - | SCENE SUBJECTS | |
| LC.02 Bright daylight | All | SS.01 People | Many |
| LC.03 Dull daylight | - | SS.02 Faces | Many |
| LC.04 Shaded areas | - | SS.03 Vehicles | - |
| LC.05 Indoors bright | - | SS.04 Buildings | - |
| LC.06 Indoors dark | - | SS.05 Trees | - |
| LC.07 Twilight | - | SS.06 Text | - |
| LC.08 Sunrise/sunset | - | SS.07 Talking head | One |
| LC.09 Night | - | SS.08 Water | - |
| | | SS.09 Leaves/grass | - |

| | | |
|-------|----------------------|-----|
| SS.10 | Sky | - |
| SS.11 | Clouds | - |
| SS.12 | Patterns | - |
| SS.13 | Round/curved objects | One |

SCENE PROPERTIES

| | | |
|-------|---------------------------|------------|
| SP.01 | Depth of field | Shallow |
| SP.02 | Out-of-focus | Background |
| SP.03 | Fine lines/moiré patterns | - |
| SP.04 | Reflections | - |
| SP.05 | Scene change | - |
| SP.06 | Fades | - |
| SP.07 | Transitions | - |
| SP.08 | Slow/fast motion | - |

COLOURS & CONTRAST

| | | |
|-------|----------------------------|---|
| CC.01 | Light picture | - |
| CC.02 | Dark picture | - |
| CC.03 | Bright colours | - |
| CC.04 | Dull colours | - |
| CC.05 | Fine detail/moiré patterns | - |
| CC.06 | High contrast areas | - |
| CC.07 | Large monochromatic areas | - |
| CC.08 | Graininess | - |
| CC.09 | Black background | - |
| CC.10 | White background | - |

GLOBAL MOTION

| | | |
|-------|----------------------|---|
| GM.01 | Fast track/pan | - |
| GM.02 | Tracking in/out | - |
| GM.03 | Tracking | - |
| GM.04 | Panning | - |
| GM.05 | Tracking (following) | - |
| GM.06 | Fast scroll | - |
| GM.07 | Scroll | - |
| GM.08 | Angled | - |
| GM.09 | Zoom in | - |
| GM.10 | Zoom out | - |
| GM.11 | Hand-held camera | - |

SUBJECT MOTION

| | | |
|-------|------------------------------------|------|
| SM.01 | Movement out of picture | - |
| SM.02 | Movement into picture | - |
| SM.03 | Movement across picture | Some |
| SM.04 | Movement up/down | - |
| SM.05 | Diagonal movement | - |
| SM.06 | Subjects behind foreground objects | Few |
| SM.07 | Low movement | - |

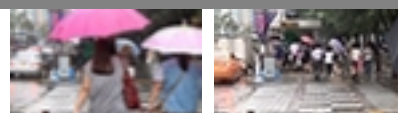
SOUND CONTENT

| | | |
|-------|------------|------------|
| SC.01 | Talking | Some |
| SC.02 | Movement | Footsteps |
| SC.03 | Vehicles | - |
| SC.04 | Wind | - |
| SC.05 | Music | Background |
| SC.06 | Background | People |
| SC.07 | Other | - |

SOUND CHARACTERISTICS

| | | |
|-------|------------------|--------|
| SH.01 | Mono/ stereo | Stereo |
| SH.02 | Average volume | Mid |
| SH.03 | Level changes | - |
| SH.04 | Clear/ distorted | Clear |

02_Seoul_shower



| | | |
|-------|---|--|
| GN.01 | Filenames [see section 3.2.1 for key] | T2V027n02_Seoul_shower_<xsize>x<ysize><f>rr_8b_P420.yuv |
| GN.02 | Horizontal x vertical sizes | 1920x1080p25 ; 1280x720i25 TFF ; 720x576p50 ; 720x576p25 ; 720x480p50 ; 720x480p25 ; 720x480i25 TFF ; 720x480i25 BFF (all 4:2:0 8-bit) |
| GN.03 | Progressive / Interlaced | p50 and p25 - Progressive; i25 TFF - Interlaced Top Field First; i25 BFF - Interlaced Bottom Field First |
| GN.04 | Video format | YUV planar 4:2:0 |
| GN.05 | Bits per sample | 8 (for each of Y, U, V) |
| GN.06 | Video description | People walking on the street in the rain, mainly away from the camera, with umbrellas |
| GN.07 | Principal purposes | Codec stress and efficiency test with multiple small changes (due to raindrops) |
| GN.08 | Duration (mins:secs:frames): | 0:43:36 (50p), 0:43:18 (25i and 25p) |
| GN.09 | Number of frames | 2,186 (50p) : 1,093 (25i) : 1,093 (25p) |
| GN.10 | File sizes on disk (MB) [same order as Horizontal x Vertical sizes] | 6,799 : 1,511 : 1,360 : 680 : 1,133 : 567 : 567 : 567 |
| GN.11 | Original video format | 1920x1080 progressive 50.0 fps |
| GN.12 | CF-words | CF-dark_areas, CF-dark_picture, CF-graininess, CF-movement_in, CF-people, CF-shaded, CF-twilight |
| GN.13 | Associated audio types | MPEG1 Layer II 48kHz 16bit stereo 384kbps Constant Bit Rate : 16bit uncompressed 48kHz stereo WAV |
| GN.14 | Associated audio filenames | T2a027x02_Seoul_shower_act_MP1LII.mpa : T2a027y02_Seoul_shower_act_unc.wav |
| GN.15 | Associated audio description | Actual audio recorded with video |
| GN.16 | Audio duration | Same as video (video played at 50.0fps) |

| Clip features | Details | LC.09 | Night | - | |
|-------------------------|-----------------|-------|-----------------------|-------------------------|------|
| LIGHT CONDITIONS | | LC.10 | Backlighting | - | |
| LC.01 | Bright sunlight | - | LC.11 | Large brightness change | - |
| LC.02 | Bright daylight | - | SCENE SUBJECTS | | |
| LC.03 | Dull daylight | - | SS.01 | People | Many |
| LC.04 | Shaded areas | Some | SS.02 | Faces | Few |
| LC.05 | Indoors bright | - | SS.03 | Vehicles | Cars |
| LC.06 | Indoors dark | - | SS.04 | Buildings | - |
| LC.07 | Twilight | All | SS.05 | Trees | Few |
| LC.08 | Sunrise/sunset | - | SS.06 | Text | - |

| | | |
|-------|----------------------|------|
| SS.07 | Talking head | - |
| SS.08 | Water | Rain |
| SS.09 | Leaves/grass | Some |
| SS.10 | Sky | - |
| SS.11 | Clouds | - |
| SS.12 | Patterns | - |
| SS.13 | Round/curved objects | Many |

SCENE PROPERTIES

| | | |
|-------|-----------------------------|------|
| SP.01 | Depth of field | Deep |
| SP.02 | Out-of-focus | - |
| SP.03 | Fine lines / moiré patterns | - |
| SP.04 | Reflections | - |
| SP.05 | Scene change | - |
| SP.06 | Fades | - |
| SP.07 | Transitions | - |
| SP.08 | Slow/fast motion | - |

COLOURS & CONTRAST

| | | |
|-------|----------------------------|--------------|
| CC.01 | Light picture | - |
| CC.02 | Dark picture | All |
| CC.03 | Bright colours | - |
| CC.04 | Dull colours | Most |
| CC.05 | Fine detail/moiré patterns | - |
| CC.06 | High contrast areas | Several |
| CC.07 | Large monochromatic areas | - |
| CC.08 | Graininess | Some - light |
| CC.09 | Black background | - |
| CC.10 | White background | - |

GLOBAL MOTION

| | | |
|-------|----------------------|---|
| GM.01 | Fast track/pan | - |
| GM.02 | Tracking in/out | - |
| GM.03 | Tracking | - |
| GM.04 | Panning | - |
| GM.05 | Tracking (following) | - |
| GM.06 | Fast scroll | - |
| GM.07 | Scroll | - |
| GM.08 | Angled | - |
| GM.09 | Zoom in | - |

| | | |
|-------|------------------|---|
| GM.10 | Zoom out | - |
| GM.11 | Hand-held camera | - |

SUBJECT MOTION

| | | |
|-------|------------------------------------|------|
| SM.01 | Movement out of picture | Lots |
| SM.02 | Movement into picture | Lots |
| SM.03 | Movement across picture | Some |
| SM.04 | Movement up/down | - |
| SM.05 | Diagonal movement | - |
| SM.06 | Subjects behind foreground objects | Many |
| SM.07 | Low movement | - |

SOUND CONTENT

| | | |
|-------|------------|------------|
| SC.01 | Talking | Some |
| SC.02 | Movement | Other |
| SC.03 | Vehicles | Traffic |
| SC.04 | Wind | Some |
| SC.05 | Music | Background |
| SC.06 | Background | Rain |
| SC.07 | Other | - |

SOUND CHARACTERISTICS

| | | |
|-------|------------------|--------|
| SH.01 | Mono/ stereo | Stereo |
| SH.02 | Average volume | Mid |
| SH.03 | Level changes | - |
| SH.04 | Clear/ distorted | Clear |